

ZOOM product driver installation guide



Read this manual to learn the procedures shared by ZOOM products to install their drivers.

• Zoom Corporation does not bear liability for any damages or third-party claims arising from the use of the software, whether directly or indirectly. Unauthorized redistribution, sale, leasing, renting, alteration, or reverse engineering of the software is prohibited. Features and specifications of the software and the contents of the documentation may be changed in future without notice.

Copyright(C) 2021 ZOOM Corporation. All Rights Reserved.

Copying or reprinting this manual in part or in whole without permission is prohibited.

Windows® is a registered trademark of Microsoft® Corporation.

Mac® is a trademark or registered trademark of Apple Inc.

Note: All trademarks and registered trademarks in this document are for identification purposes only and are not intended to infringe on the copyrights of their respective owners.

Proper display is not possible on grayscale devices.

The illustrations in these instructions might differ from actual screens.

Contents

CONTENTS	2
FOR WINDOWS	2
INSTALLATION AND UPDATING	2
CONFIRMING INSTALLATION	5
UNINSTALLATION.....	7
FOR MAC	9
INSTALLATION AND UPDATING	9
CONFIRMING INSTALLATION	14
UNINSTALLATION.....	15

For Windows

■ Installation and updating

If the driver has already been installed, following these installation procedures will update it by reinstalling it.

Disconnect the product from the computer before installation/uninstallation.

Close all other running applications before launching this application.

We use the LiveTrak L-8 as an example from here.

1. Download the Windows driver file.

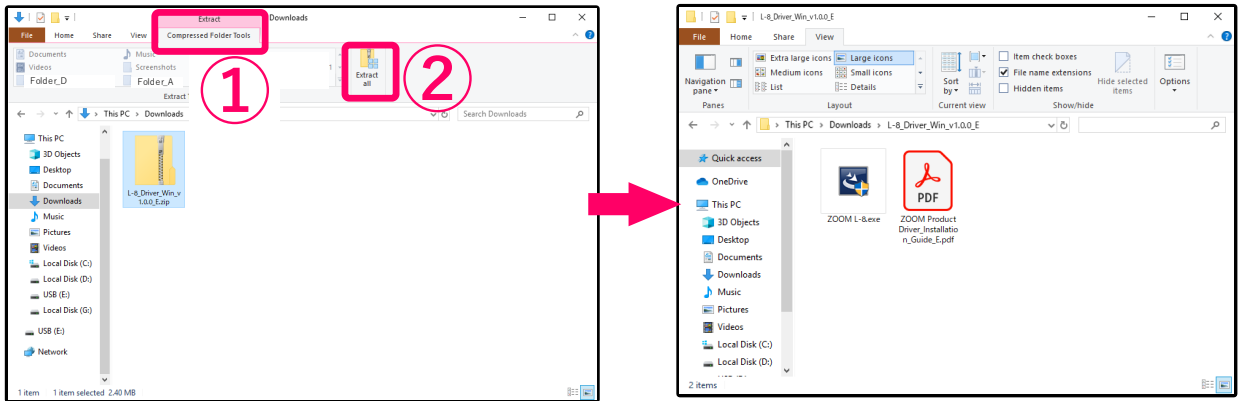
Download the ZIP file that contains the driver installer from the product download page.



Note: Driver names are different for each product.

2. Extracting the ZIP file.

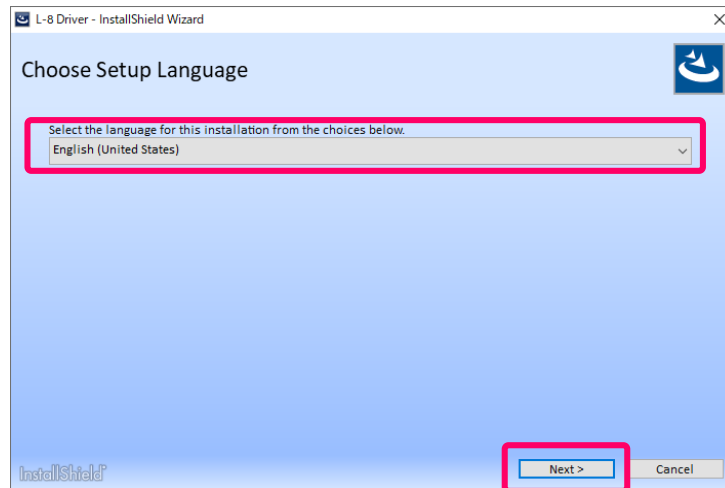
Select the folder where you downloaded the ZIP file. ① Click "Compressed Folder Tools", then ② "Extract All". The ZIP file will be extracted.



3. Double-click the installer file.

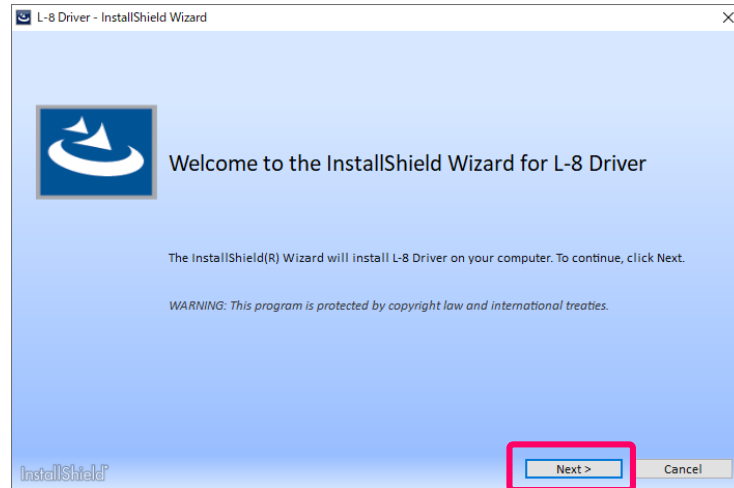
When "Do you want to allow this app to make changes to your device?" appears in a pop-up, select "Yes".

4. Select the language, and click "Next >".



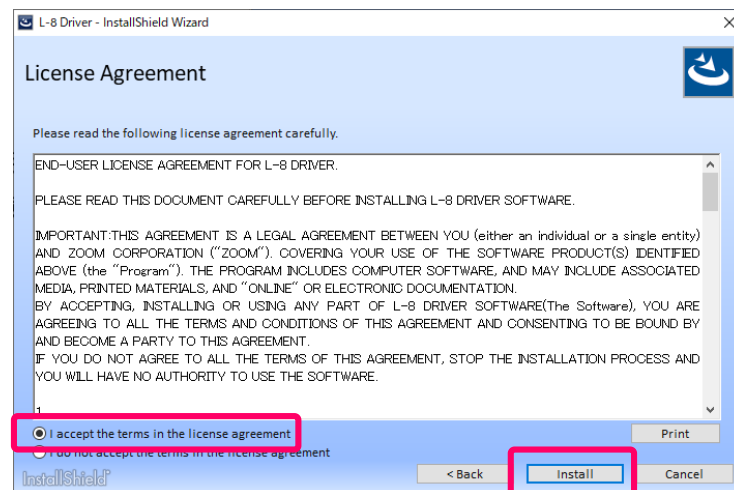
Note: Installer names are different for each product.

5. Click "Next >".

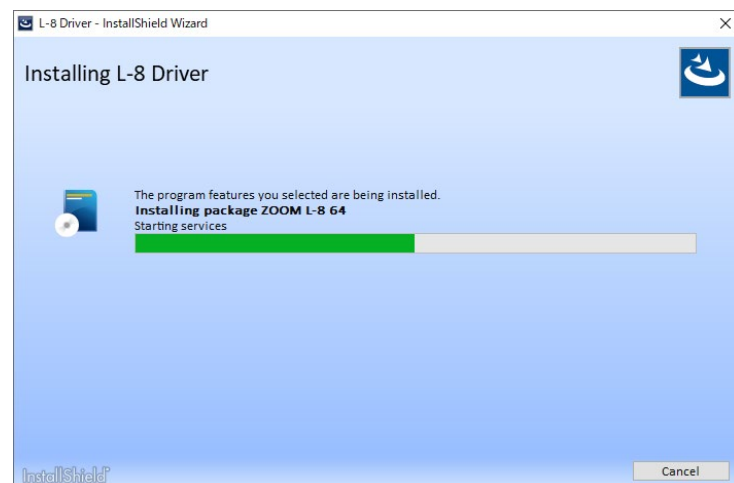


Note: Installer names are different for each product.

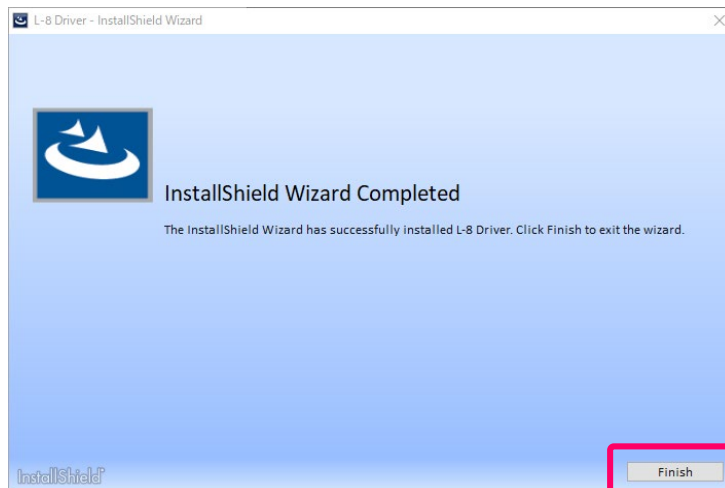
6. This opens the License Agreement. After carefully reviewing the content, check "I accept the terms in the license agreement" if you accept it, and click "Install".



7. This starts installation.



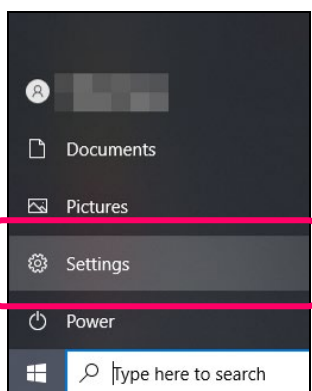
8. Click “Finish” to complete installation.



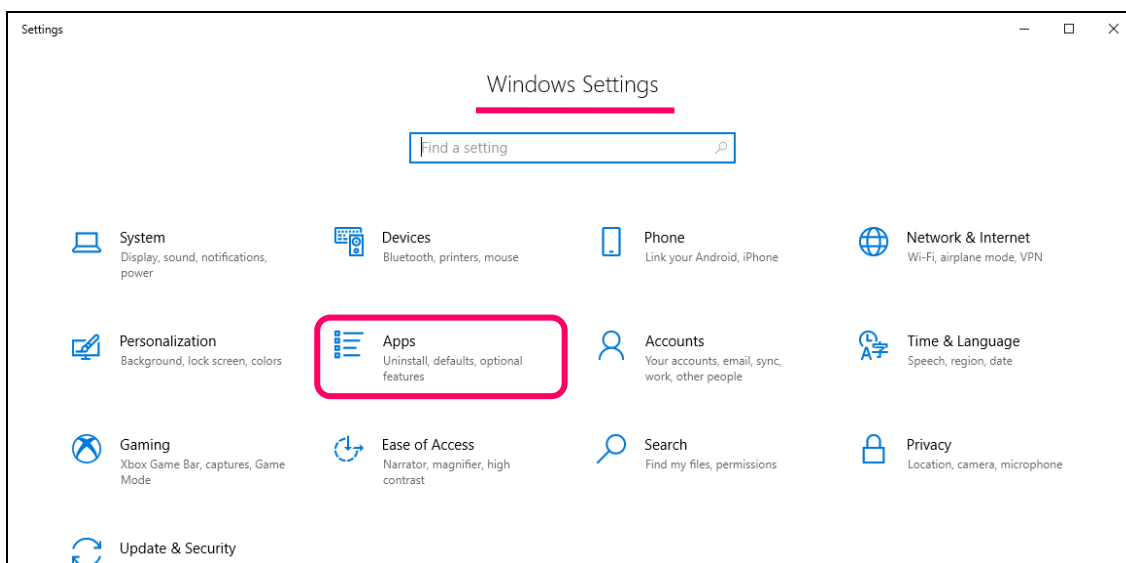
■ Confirming installation

Follow the procedures below to check whether or not the driver has been installed.

1. From the **Start** menu, open **Settings**.



2. Select **Apps**.



3. Search for the product driver under **Apps & features**.

Apps & features

Choose where to get apps

Installing apps only from Microsoft Store helps protect your device.

Anywhere

Apps & features

[Optional features](#)

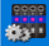
[App execution aliases](#)

Search, sort, and filter by drive. If you would like to uninstall or move an app, select it from the list.

L-8

Sort by: Name Filter by: All drives

1 app found

	L-8 Driver	5.21 MB 2021/03/23
---	------------	-----------------------

Note: Driver names are different for each product.

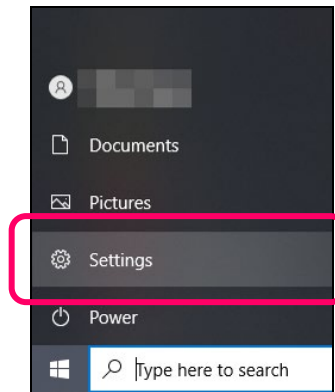
HINT

Try the following if you cannot find the driver.

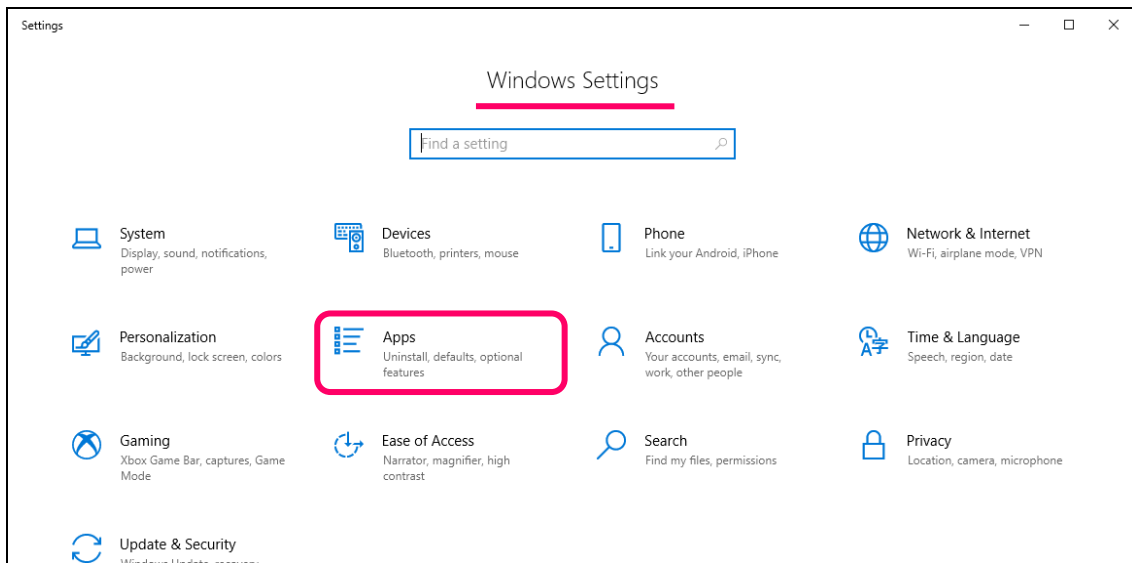
- Check the name of the driver of the installed product.
 - Change **Sort by** to **Install date** before searching.
 - Install the driver again.
-

■ Uninstallation

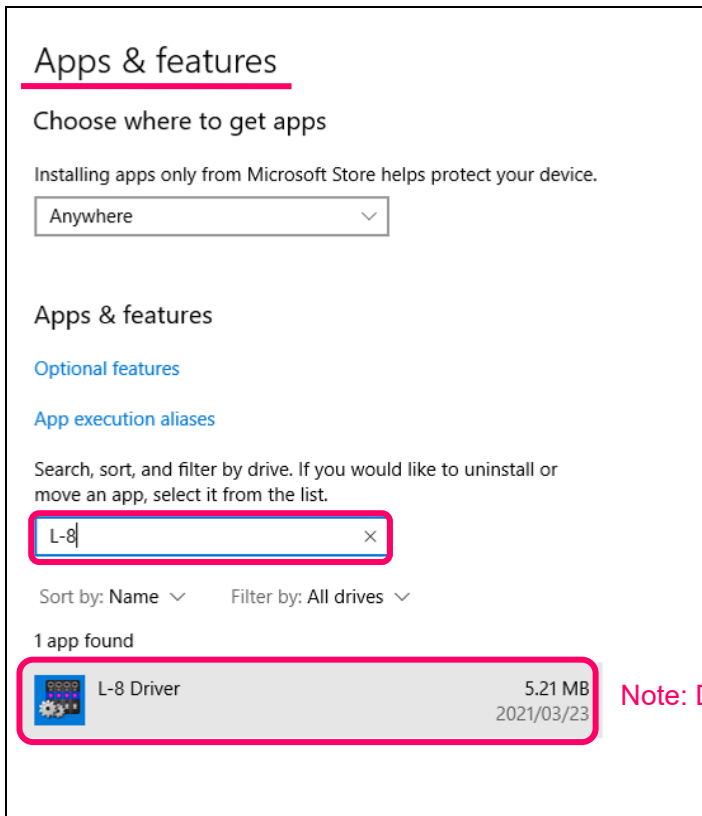
1. From the **Start** menu, open **Settings**.



2. Select **Apps**.



3. Select the product driver from **Apps & features**.



Note: Driver names are different for each product.

HINT

Try the following if you cannot find the driver.

- Check the name of the driver of the installed product.
- Change **Sort by** to **Install date** before searching.
- Install the driver again.

4. Select **Uninstall** to execute uninstallation.



Note: Driver names are different for each product.

For Mac

■ Installation and updating

If the driver has already been installed, following these installation procedures will update it by reinstalling it.

Disconnect the product from the computer before installation/uninstallation.

Close all other running applications before launching this application.

We use the LiveTrak L-8 as an example from here.

1. Download the Mac driver file.

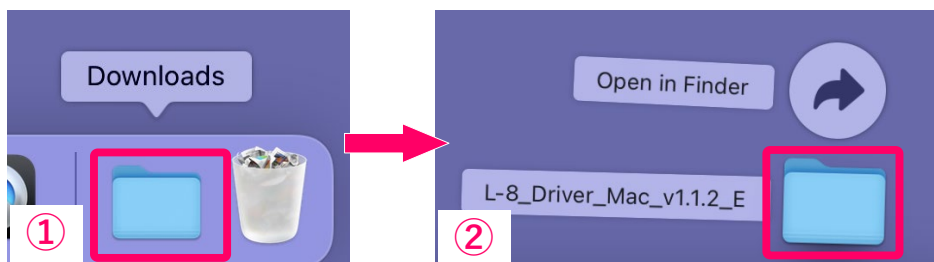
Download the ZIP file that contains the driver installer and uninstaller from the product download page.



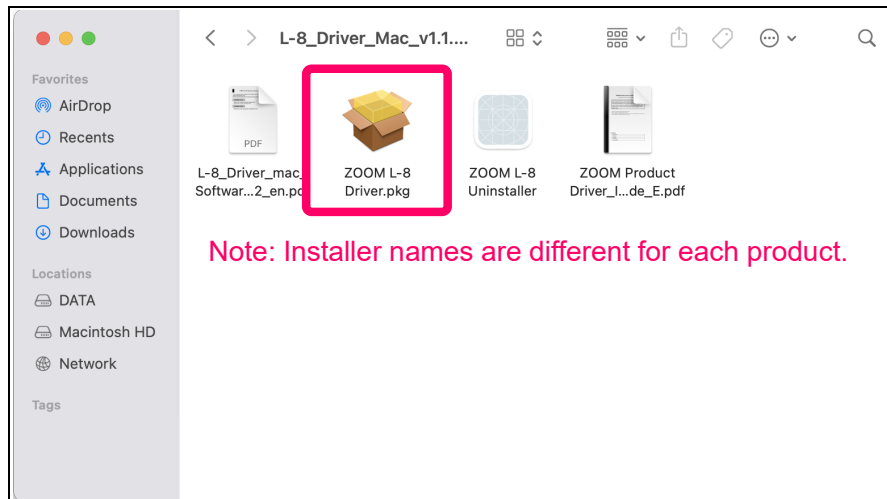
2. Open the driver folder.

After downloading, click ① “Downloads”, which appears at the bottom of the screen by default. Then, click

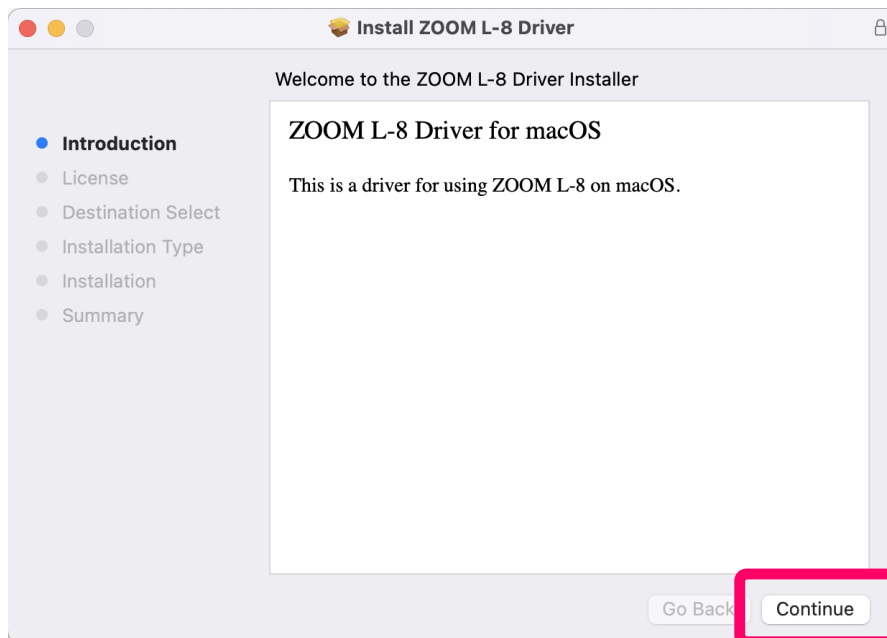
②. This will open the downloaded folder. Folder names are different for each product.



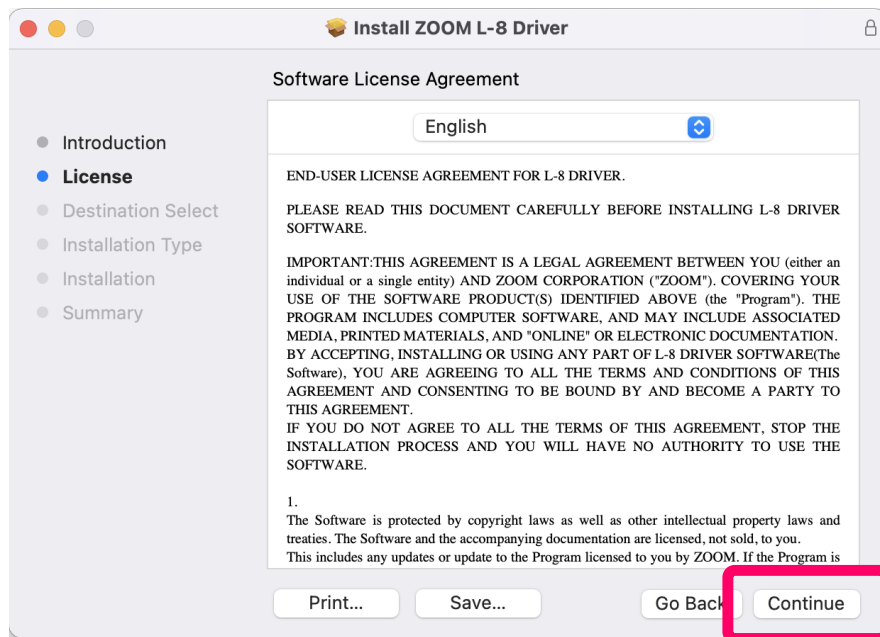
3. Double-click the driver installer.



4. Click "Continue".

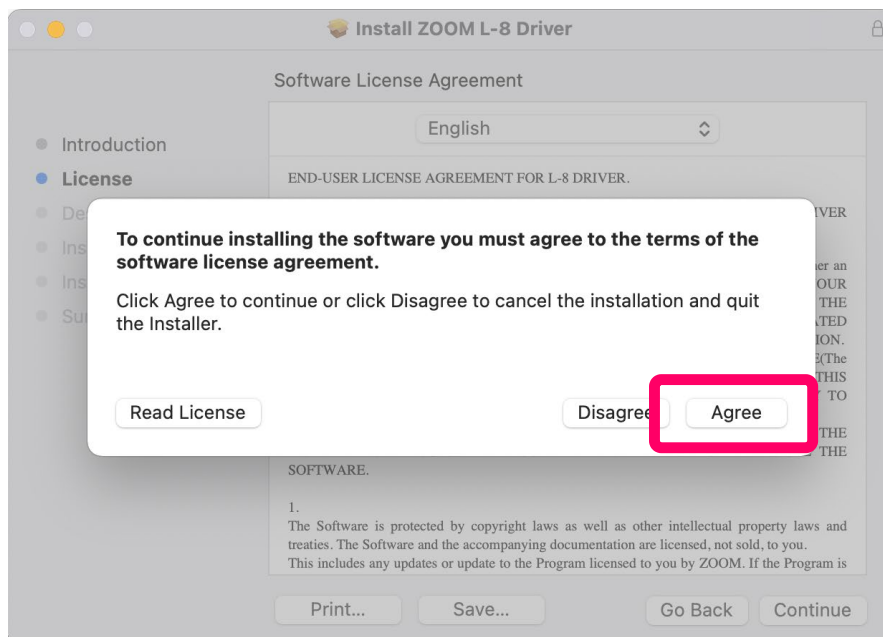


5. This opens the Software License Agreement. After checking the contents carefully, if you agree to them and will use the software, click “Continue”.

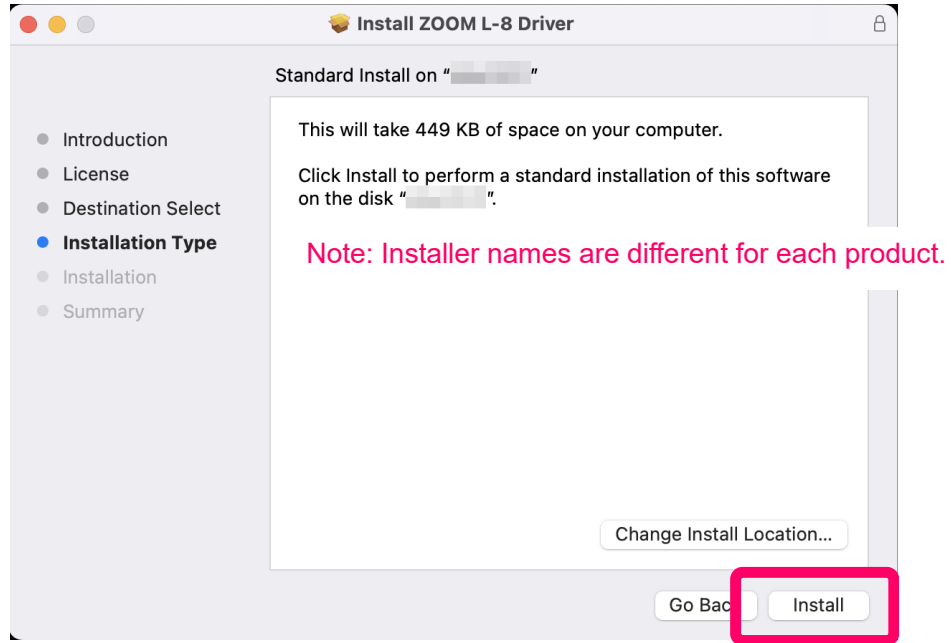


Note: Installer names are different for each product.

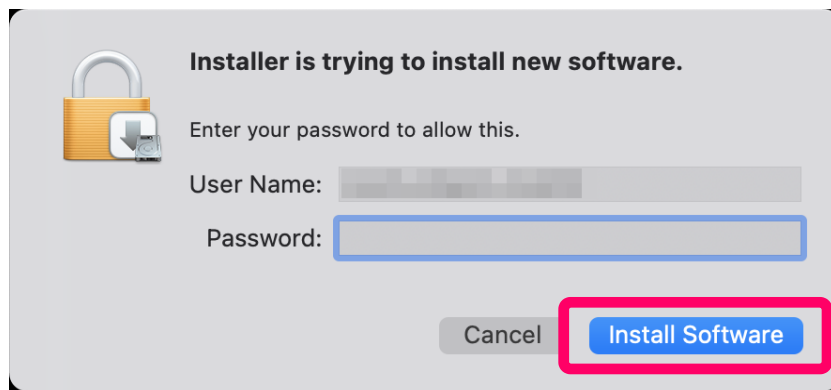
6. If you agree to the Software License Agreement, and will use the software, click “Agree”.



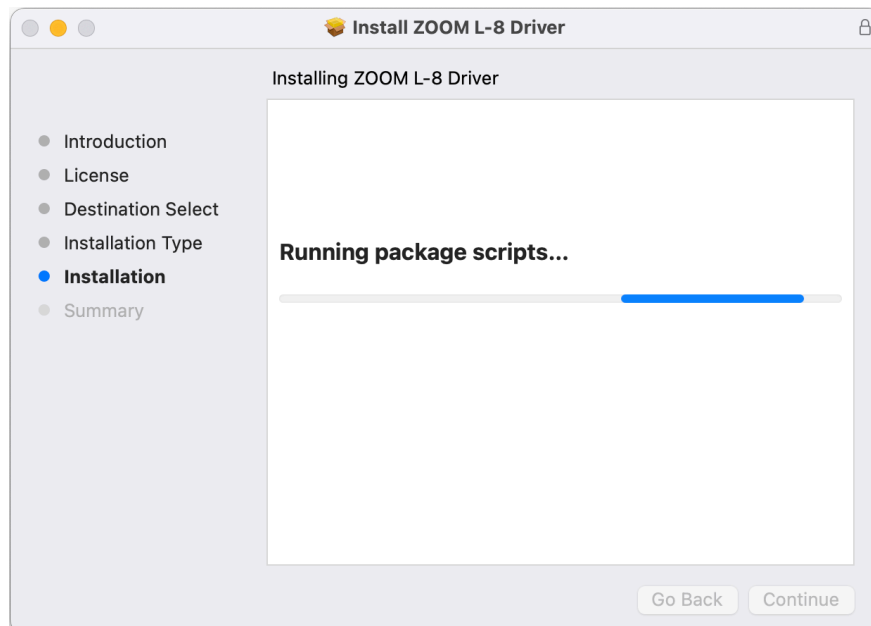
7. Click "Install".



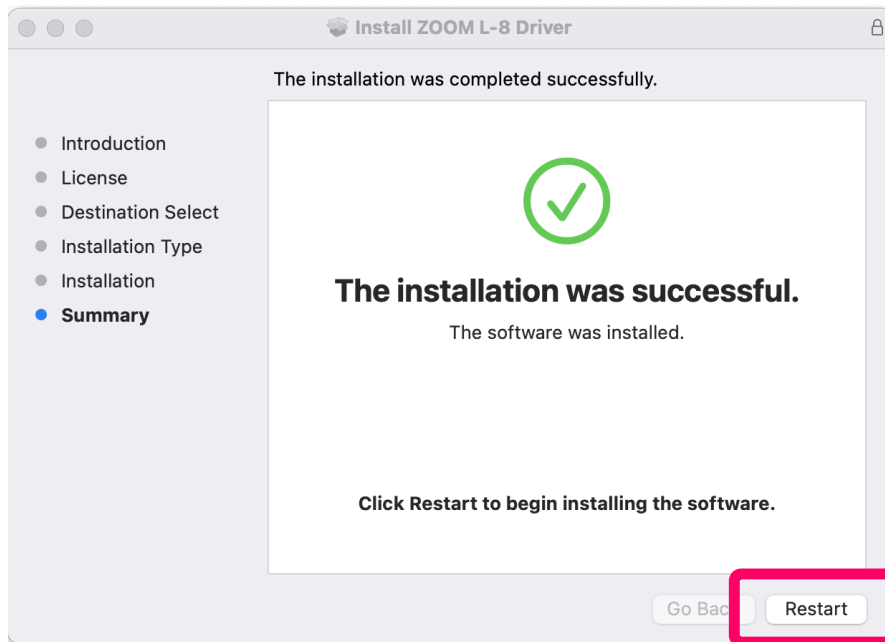
8. Input the password, and click "Install Software".



9. This starts installation.

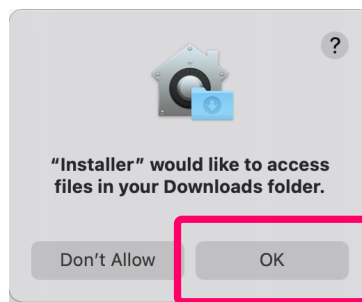


10. Click "Restart".

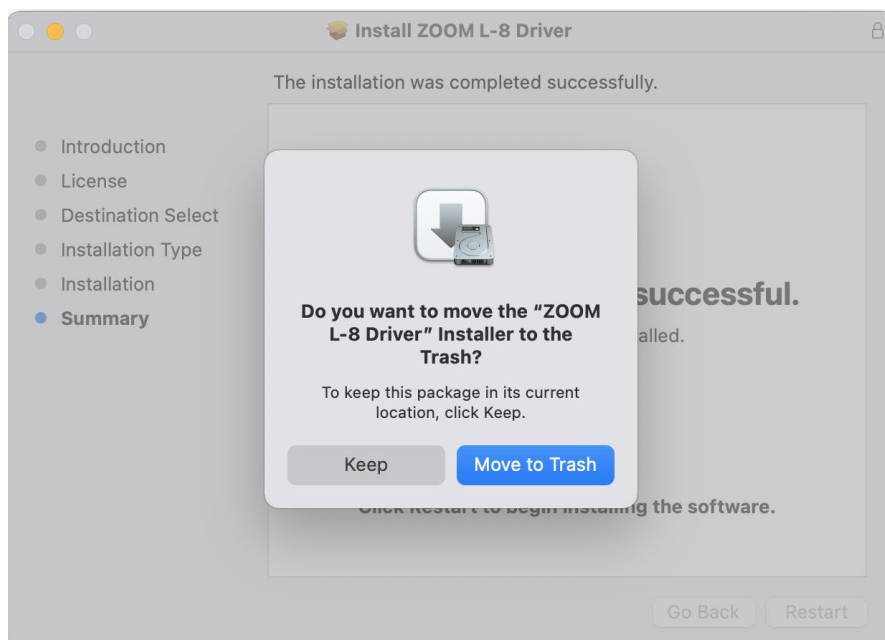


Note: Installer names are different for each product.

11. Click "OK".



12. Click "Move to Trash" or "Keep" as necessary.

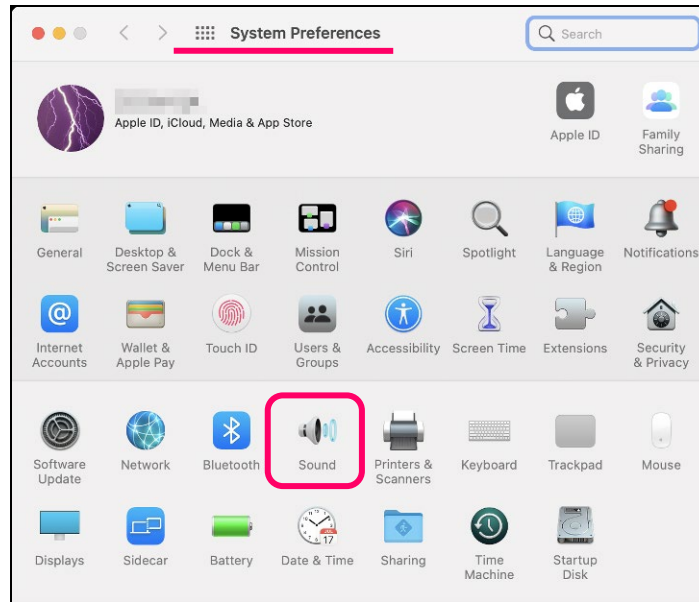


13. The computer will restart, completing installation.

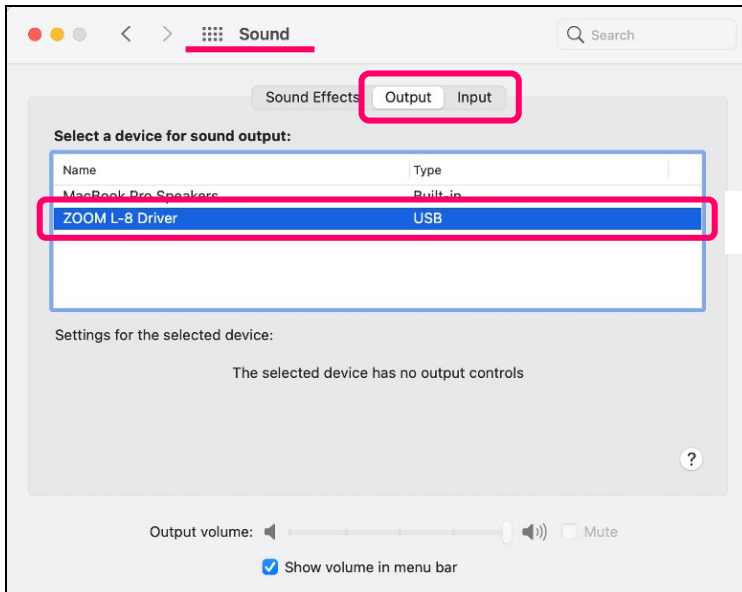
■ Confirming installation

Follow the procedures below to check whether or not the driver has been installed.

1. Open the **Sound** pane in the **System Preferences**.



2. Select the **Output** or **Input** tab.
3. Connect the product to the Mac and turn it on.
Depending on the product, settings on its might be necessary. See the product manual for details.
4. Confirm that the product appears on the screen.



Note: Driver names are different for each product.

■ Uninstallation

1. Download the Mac driver file.

Download the ZIP file that contains the driver installer and uninstaller from the product download page.

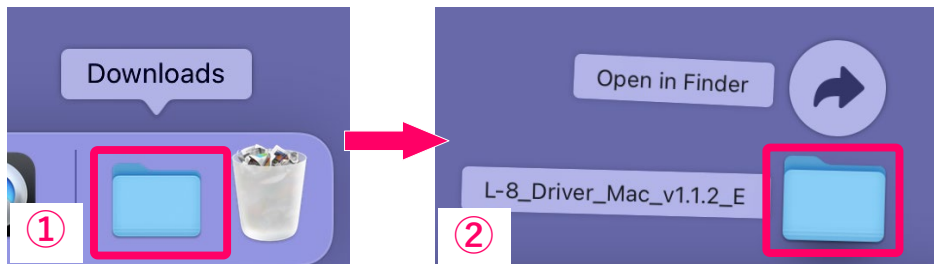


Note: Driver names are different for each product.

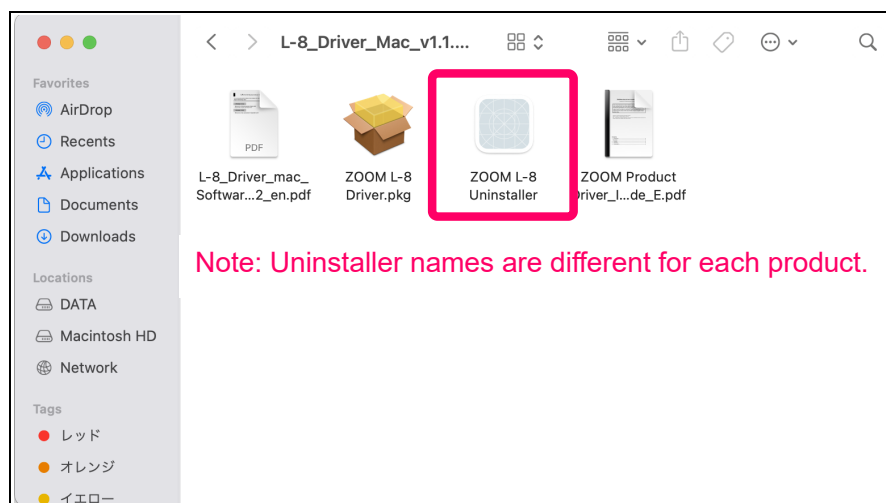
2. Open the driver folder.

After downloading, open the ① “Downloads” folder, which appears at the right end of the Dock by default.

Then, click ②. This will open the downloaded folder. Folder names are different for each product.

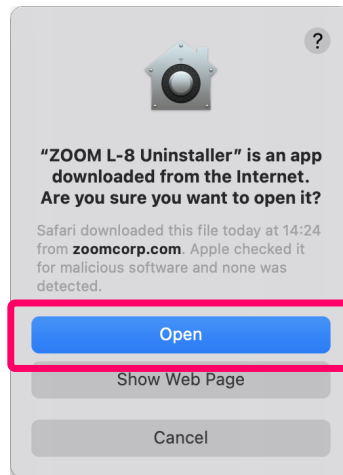


3. Double-click the uninstaller.

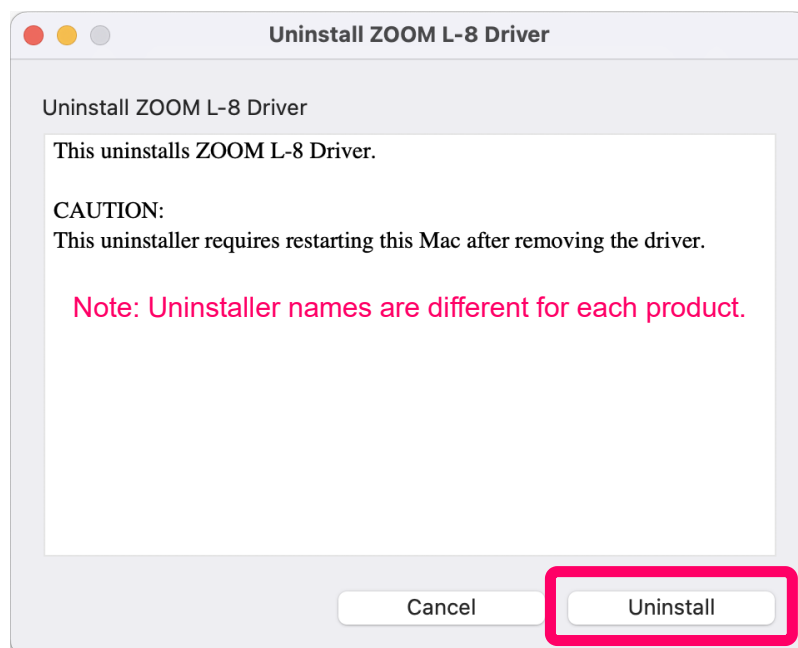


Note: Uninstaller names are different for each product.

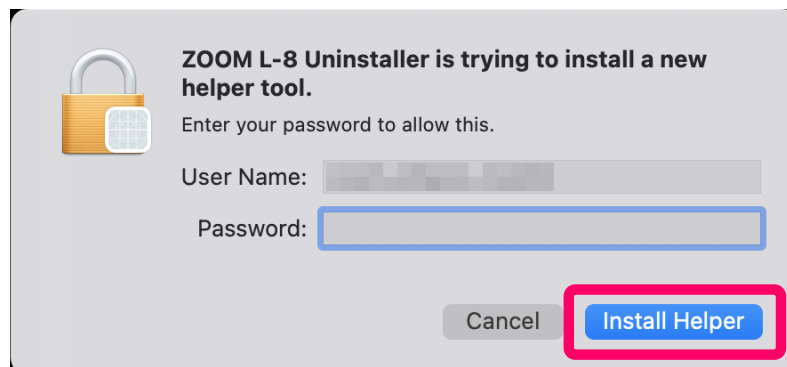
4. Click "Open".



1. Click "Uninstall".



2. Input the password, and click "Install Helper".



3. Click "Restart" to complete uninstallation.

